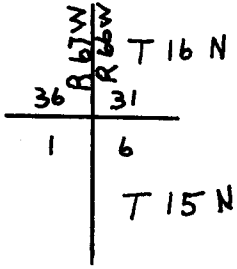


CERTIFIED LAND CORNER RECORDATION

DESCRIPTION OF CORNER EVIDENCE FOUND, AND ORIGINAL RECORD (if known)

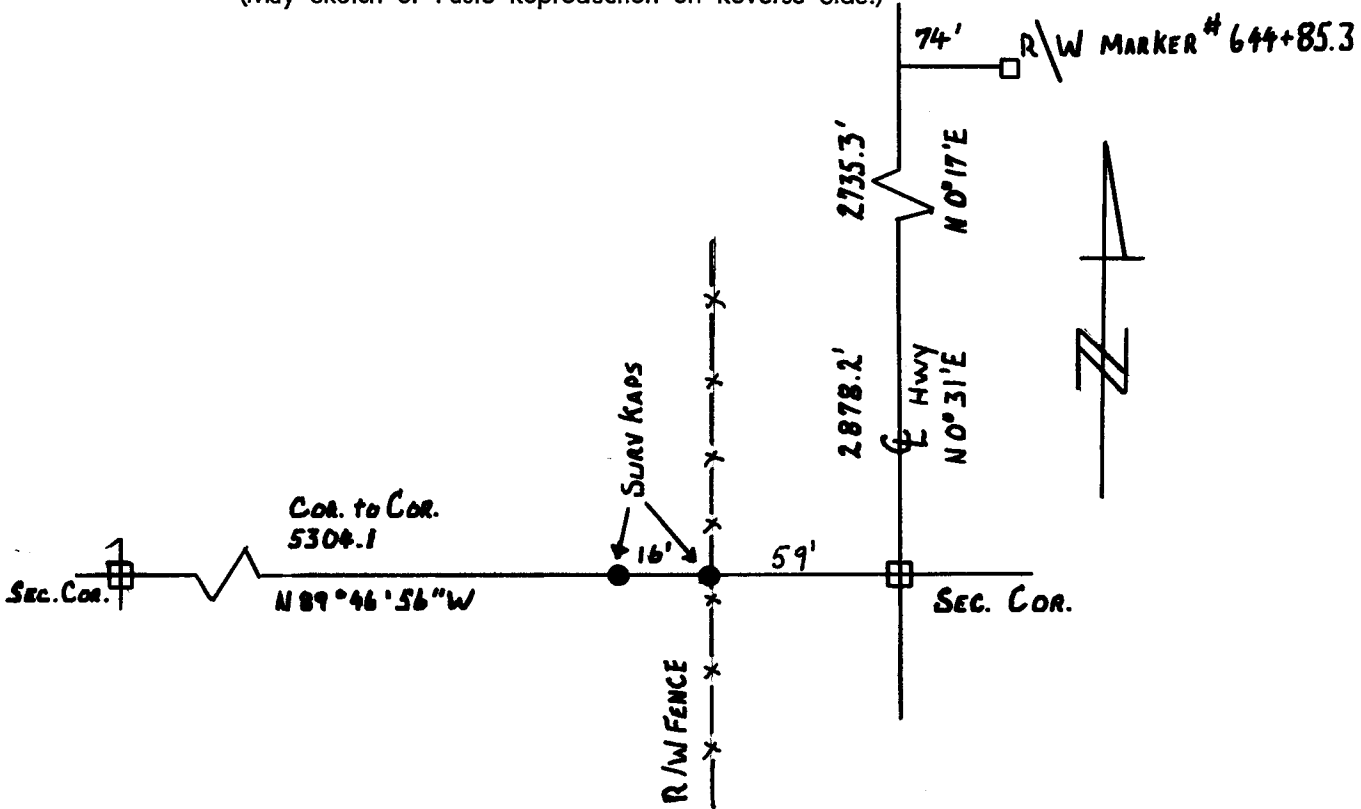


Corner located in center of asphalt highway. I used the Highway Dept. Plans F.A.P. 144(2) dated 1940 to reset Corner as indicated on those plans.

DESCRIPTION OF MONUMENT AND ACCESSORIES ESTABLISHED TO PERPETUATE THE ORIGINAL LOCATION OF THIS CORNER:

I set two #5 Rebars with Surv-Kaps along the South boundary of Section 36 as indicated on the sketch below.

SKETCH, WITH COURSE AND DISTANCE TO ADJACENT CORNER IF DETERMINED IN THIS SURVEY.
(May Sketch or Paste Reproduction on Reverse Side.)



I, Edward C. Fry certify that I have carefully performed or reviewed the work done on the diagrammed corner as reported on this recordation form and approve the same.

Edward C. Fry Wyo # 662
Signature of Surveyor Registration No.

STATE OF WYOMING,
Office of Clerk and Recorder,
County of Sarasota

This "corner record" was filed for record on the 4 day of June, 1976, was noted on the cross-index plat and is assigned page No. _____, in book No. _____

Janet C Whitehead
County Official

Cross Index No. <u>225</u>	T. <u>16</u>	R. <u>67</u>	Mer.
_____	T. _____	R. _____	Mer.
_____	T. _____	R. _____	Mer.
_____	T. _____	R. _____	Mer.
_____	T. _____	R. _____	Mer.
_____	T. _____	R. _____	Mer.
_____	T. _____	R. _____	Mer.

Photographed
Indexed
Posted
Assessor

The State of Wyoming }
County of Laramie } SS

This instrument was filed for record
at 912 o'clock pm M. on the
4 day of June
A. D. 19 19 and duly recorded in
book _____ on page _____

Janet C. Whithead

County Clerk & Ex-Officio Register of Deeds
By _____ Deputy